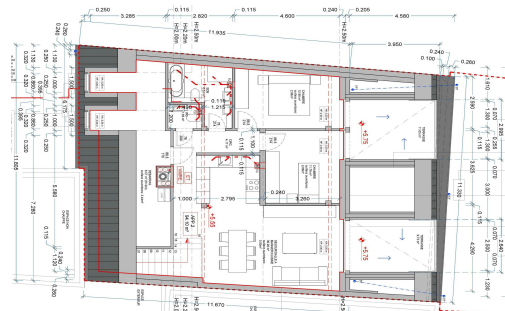




Appartement à vendre

94.00 m² 2 chambre(s)
Filsdorf

945 000 €



DESCRIPTION

RE/MAX FORUM, real estate specialist in FILSDORF, Dalheim, offers for sale this beautiful top floor apartment UNDER CONSTRUCTION. The apartment is located in a two-family house (only two units), close to major roads and between the Moselle and Luxembourg city regions. This property with a surface area of +- 94 m² is composed as follows: An entrance hall, an OPEN-SPACE (Living room and Kitchen) of +-36 m² with access to a beautiful terrace of +- 10 m², a separate WC, two bedrooms with access to a beautiful terrace of +- 11 m², a bathroom and a large storeroom with windows. A private cellar with connections for the washing machine/dryer, a +- 98 m² garden and two interior parking spaces complete this beautiful ensemble. All our prices are "land + house", including VAT at 3% and 17%, subject to acceptance of your application by the registration authorities for reduced VAT. *Illustrations are for information only and are not contractual. Agency fees are payable by the...

DETAILS DU BIEN

Nombre de chambre(s) : **2**

Surface : **94.00 m²**

Terrain : -

Balcon : **oui**

Terrasse : **oui**

Jardin : **oui**

Garage(s) : 2

Parking(s) souterrain(s) : -

Parking(s) : -

Parking collectif : -

Année de construction : **2023**

Disponibilità : -

Nombre d'étage : -

Etage : -

Rénové : **non**Meublé : **non**

 154, avenue du X Septembre, L- 2550 Luxembourg

 forum@remax.lu

 <https://www.remaxforum.lu/>

DIAGNOSTICS
ENERGETIQUES

Indice énergétique



Indice isolation

